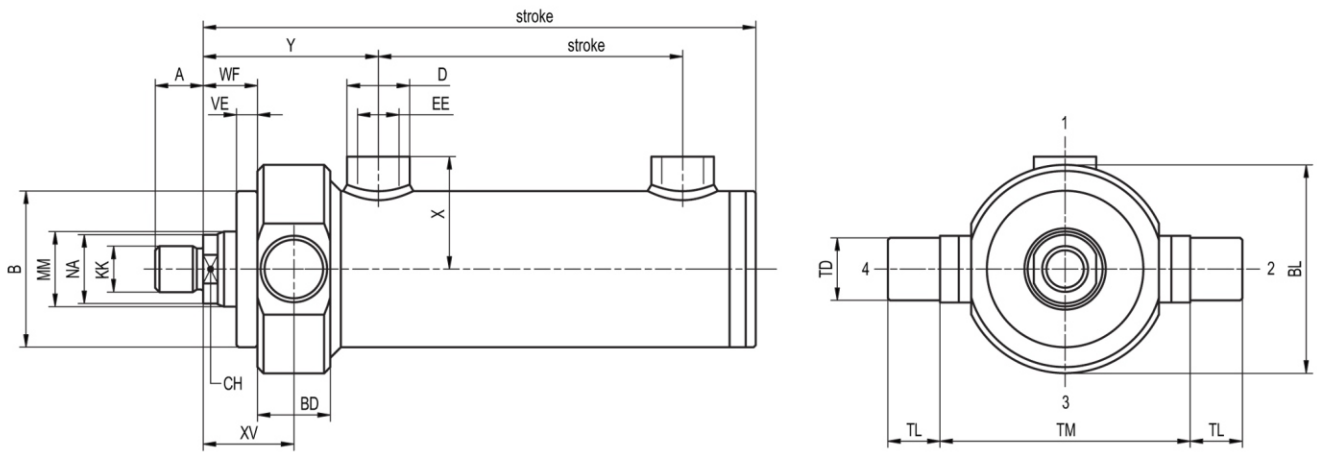


MD18 MD

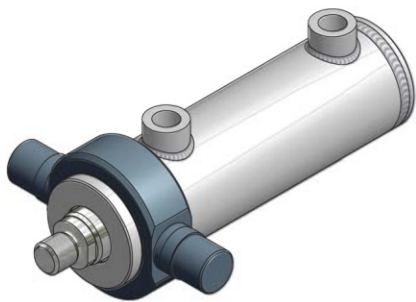
double acting hydraulic cylinders



All dimensions are in millimetres.

Piston Ø	MM Ø	A	B Ø	CH	X	D Ø	EE	KK	NA Ø	WF	VE	Y	PJ	ZJ
25	14	17	35	12	32	20	G 1/4	M 12×1.25	13	17	8	43	18*	78*
32	20	19	42	15	36	20	G 1/4	M 14×1.5	17	20	10	61	38*	129*
40	22/ 28	16	50	17	41	26	G 3/8	M 16×1.5	20	25	10	69	42	137
50	28/ 36	16	60	22	46	26	G 3/8	M 16×1.5	25	25	10	75	45	150
63	36/ 45	23	75	30	56	30	G 1/2	M 22×1.5	34	26	10	87	48	165
70	40/ 45	23	85	30	60	30	G 1/2	M 22×1.5	34	26	10	83	56	165
80	45/ 56	35	95	36	66	30	G 1/2	M 35×1.5	40	27	10	97	53	193
90	40/ 50	35	105	36	70	30	G 1/2	M 35×1.5	38	27	10	93	66	193
100	56/ 63/ 70	45	115	46	78	38	G 3/4	M 45×1.5	50	27	10	112	62	214
110	63/ 70	45	130	46	86	38	G 3/4	M 45×1.5	50	27	10	107	72	214
125	70/ 90	58	145	60	93	38	G 3/4	M 58×1.5	65	32	12	128	63	240
140	80/100	65	165	65	104	45	G 1	M 65×1.5	75	32	12	142	75	270
160	90/110	80	190	80	119	45	G 1	M 80×2	85	40	15	155	75	295
180	110/125	80	220	80	134	45	G 1	M 80×2	90	50	20	170	75	320
200	125/140	110	245	110	144	45	G 1	M 110×2	120	50	20	190	75	340
250	140/160	125	300	120	175	45	G 1	M 120×3	130	58	20	198	107	390

* At stroke up to 10 mm PJ and ZJ are extend for 10 mm.



Piston Ø	XV	BD	TD Ø f8	TM	TL	BL
25	25	16	12	50	14	45
32	30	20	17	68	17	60
40	37.5	25	20	90	16	70
50	40	30	25	105	20	80
63	43.5	35	30	120	25	100
70	43.5	35	30	120	25	110
80	49.5	45	40	135	32	125
90	49.5	45	40	135	32	135
100	54.5	55	50	160	40	150
110	54.5	55	50	160	40	150
125	64.5	65	60	195	50	180
140	67	70	65	220	60	200
160	82.5	85	80	240	60	235
180	82.5	85	80	270	60	265
200	102.5	105	100	295	80	295
250	123	130	125	365	100	360